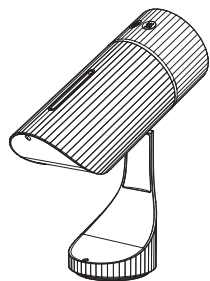


Candyl Flex

INSTRUCTION MANUAL



INTRODUCTION:

Candyl Flex is the flexible diffuser.

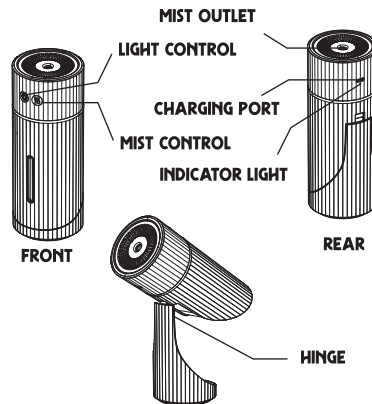
You can choose the shape and angle of the body, as well as the direction, color, and frequency of the mist. Plus, you can put it anywhere thanks to the rechargeable battery.

Candyl Flex also functions as a humidifier, as well as a mood-lighting table lamp. While angled, the chosen color will glow onto the desk or surface it's placed upon.

You can use the lights without the diffuser, or the diffuser without the lights. Each button controls the respective function independently of the other. See the "Button Operation" page for more information.

Happy diffusing!

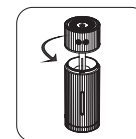
ABOUT THE PRODUCT:



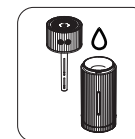
INDICATOR LIGHT: (underneath charging port)

RED = CHARGING
BLUE = CHARGING COMPLETE

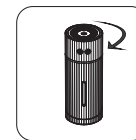
OPERATING INSTRUCTIONS:



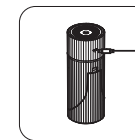
Open the top by unscrewing counter-clockwise.



Add water to fill line. Dilute in essential oils if desired.



Close the top by screwing on clockwise.



Plug in USB-C cable into any standard USB charger.

BUTTON OPERATION:



LIGHT BUTTON



- 1ST PRESS Candle lighting
- 2ND PRESS Multi-color lighting
- 3RD PRESS Start color cycling
- 4TH PRESS Stop on current color
- 5TH PRESS Turn off lighting



MIST BUTTON



- 1ST PRESS Continuous mode
- 2ND PRESS Intermittent mode
- 3RD PRESS Turn off mist



Continuous Mode Runs for 1 Hour
Intermittent Mode Runs for 2 Hours

INTERMITTENT MODE:

2 seconds on, 2 seconds off (repeating)



NOTICE



This product has **Automatic Timer Shutoff Feature:**



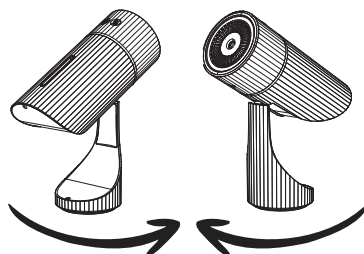
1 Hour Timer (Continuous Mode)
2 Hour Timer (Intermittent Mode)



Press mist button to restart after 1-2 hours of use

CUSTOMIZATION:

BEND AT HINGE TO CHOOSE CUSTOM ANGLES



WARNING: Do NOT SET TO 90 DEGREES



IT MAY TIP OVER AND FALL AS THE WATER EMPTIES WHICH COULD CAUSE DAMAGE

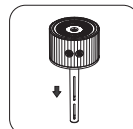
CARE & MAINTENANCE:



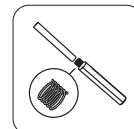
NOTICE: Fill with water before pressing the mist button. Turn off the misting function when the water is empty.

(mist button glowing blue indicates the function is on)

COTTON STICK CLEANING & REPLACEMENT:



PULL THE CASING DOWN TO REMOVE COTTON STICK



TAKE CARE NOT TO LOSE THE ENCLOSED SPRING

Clean by squeezing in running or soapy water. Replace with a fresh cotton stick every 3-6mo or as needed. Additional sticks can be purchased at candyl.co/accessories.



PRODUCT DETAILS:

Product name: Candyl Flex
Model year: 2024
Input voltage: DC5V ---
Working current: 250mA-500mA
Operating power: 2W
Battery capacity: 1000mAh
Battery technology: Li-ion
Battery classification: UN3481
Charging time: about 1.5 hours
Battery life: about 3.5 hours
Water tank capacity: 260mL
Spray volume: 50mL / H
Tank life: 4 hours continuous, 8 hours intermittent
Product size: 2.8x2.8x7.3in (72x72x185mm)
Product weight (empty): 8.2oz (233g)
Material: ABS / PP / Silicone
International standard: GB4706.1-2005
GB4706.48-2009



Battery Built-in

Country of manufacture: China
Imported by: Candyl LLC, Denver, CO USA

Candyl is a registered trademark of Candyl LLC

HELP & WARRANTY:

If you are experiencing issues with your diffuser, please visit candyl.co/help for additional information or to get product support. To get in touch, use the "contact us" button on the website, call 310-866-3807, or email contact@candyl.co.



Your diffuser is covered by a 1-year limited warranty. If we are unable to resolve your issue through product support, you will be sent a replacement at no cost. Rather than returning the product to the store where you purchased it, visit candyl.co/warranty and fill out the online form to receive your free replacement.

