

Volcano

Diffuser & Humidifier

HERE'S HOW TO GET STARTED

5 Press the top button to start



1st Press: Volcano Puff Mode
(intermittent output)

2nd Press: Eruption Mode
(maximum output)

3rd Press: Turn Off

HOLD in the button to switch light color
between 3 modes: Fire / Ice / Off

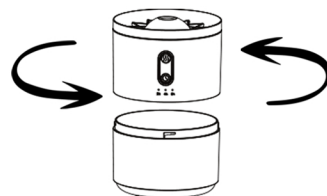
6 Setting the Timer



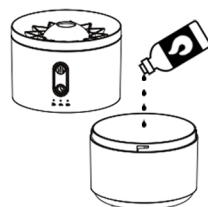
The light indicates which timer is active.

Pressing the button cycles through the 3 countdown times.
Cycling through back to the original time resets the timer.
One timer is active at all times, ensuring automatic shutoff.

1 Separate the two white pieces by turning counterclockwise

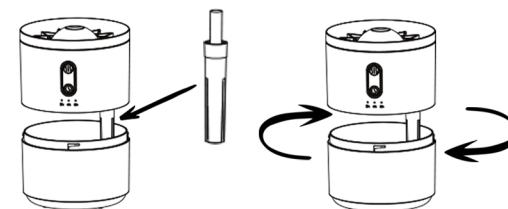


2 Add water & essential oil

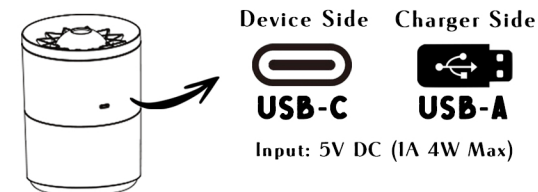


Holds up to 15oz (450ml)
Add essential oil to preference.
Suggested Range 15-30 drops.

3 Ensure plastic tube is installed then twist the top back on



4 Plug in the USB-C cable into any standard 5v USB charger

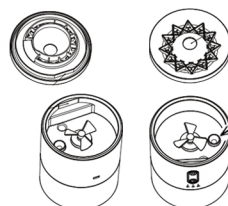


Device Side Charger Side



Input: 5V DC (1A 4W Max)

Cleaning & Care



The black top can be removed
to clean the top chamber.

If hard water buildup accumulates
on the metal atomizing disc,
gently clean with a household
descaling solution and q-tip.

Cotton Sticks go inside the plastic tube.



They can be removed to be cleaned or changed.
Be careful not to lose the spring inside the
tube while replacing the cotton sticks.

One spare is included in the package.
Additional cotton sticks can be purchased at:



candyl.co/accessories



the candle... *Reinvented*

USA Trade-Mark

candyl.co

diffusers | essential oils | candles

contact@candyl.co